

## **Super Slim Aboveground Rainwater Harvesting System**

### **Installation Instructions and Guidelines**

The Halsted Rain Aboveground Rainwater Harvesting System is designed specifically for storing and delivering rainwater for toilet flushing and micro irrigation. It can be installed on domestic and light commercial property and is an ideal retrofit option. The system is simple, reliable and affordable compared with belowground alternatives and is an efficient solution when space is limited. Each component is carefully designed for ease of installation and maintenance.

This document is intended as a guide and as such does not cater for every situation that might be experienced during installation. Halsted Rain assumes that the installer has sought and been granted all necessary permissions and will employ good building practise.

#### 1. General Health and Safety Guidelines

These guidelines are prepared for the experienced DIY and trade installer and should always be read in conjunction with the detailed instructions provided with each component and available to be downloaded from the Halsted Rain website. Components should be installed using the special fittings and fixtures supplied. A qualified electrician should undertake electrical installation. It is recommended that components with a pre-fitted plug are connected to the power supply via an RDC socket. The installer should know the whereabouts of other services, pipes, cables, ducts etc. Normal safety precautions must be taken and appropriate procedures observed to avoid accidents.

#### 2. Regulation

Councils give expeditious and sympathetic handling of planning permission to applications for new build and extensions which include rainwater harvesting. The retrofitting of most systems does not need planning consent, but exceptions apply for Listed Buildings, buildings in Conservation Areas and World Heritage sites. If you are in any doubt about planning requirements contact the local planning office.

There are currently no direct building regulations for rainwater harvesting. However, Hygiene and Drainage are covered by the Building Regulations and can influence rainwater harvesting system design.

Several other associated regulations apply; In England and Wales the Water Supply Regulations 1999 (Water by-laws 2000 in Scotland and Water Supply (Water Quality) Regulations (Northern Ireland) 2002 must be adhered to. These regulations are enforced by the water supplier.

The essential requirements of the regulations specific to rainwater harvesting are;

- ❖ No cross bonding of rainwater piping with potable supply pipes
- ❖ Prevention of backflow to potable water supplies according to CEN EN1717 with air gaps
- ❖ The clear marking of rainwater pipes with the words “Not Drinking Water” or other identification in accordance with WRAS # 9-02-05
- ❖ Material specifications, where contact with wholesome water is permissible meet the prevailing approved list.

Further guidance on the design and utility of rainwater harvesting systems is provided in British Standard 8515 and the Code for Sustainable Homes.

### 3. Aboveground Rainwater Harvesting System

The package comprises of 4 main components.

#### ➤ Filter

The filter removes leaf litter and debris from the rainwater before diverting it to a tank. It also incorporates an inspection flap for easy access and maintenance and a backflow prevention feature to ensure foul water from the drain cannot enter the tank. Depending upon the system layout the filter can also act as the tank overflow. The filter is a high grade stainless mesh enclosed in a UV protected ABS plastic.

#### ➤ Tank

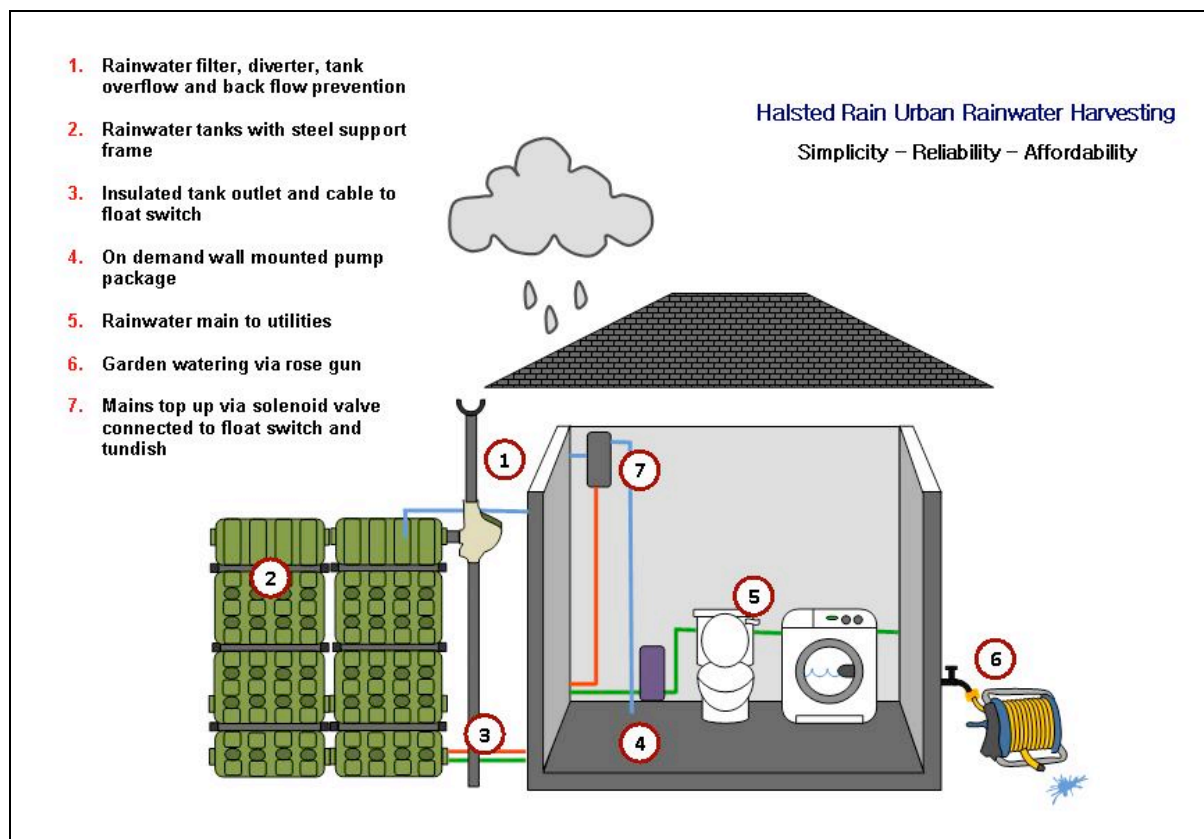
Tank modules can be connected together side by side to provide the storage capacity required. They are purpose made of food grade polyethylene for storage of rainwater to be used inside a property. The tank is of a heavy duty patented construction with added UV protection and is opaque to protect the quality of stored water.

#### ➤ Rainwater Pump

Halsted Rain offers several pump packages to match a range of duty requirements. For toilet flushing and micro irrigation we recommend a compact low noise unit that will refill a toilet cistern in less than a minute. The pump is pre set to self prime and supply water on demand. When the pressure in the pipe work reaches the required level the pump will switch off automatically.

#### ➤ Mains Top Up Valve

The valve is designed to supply mains water to the tank when there is insufficient rainwater. It incorporates a valve, tundish and float switch and will automatically activate when the water level is low and top up the tank with several litres of mains water. This maintains the utility but leaves the tank empty to receive rainwater.



#### 4. Considerations when installing a Halsted Rain System

##### ➤ Filter

Correct installation of the filter is essential to maintain the quality of rainwater stored in the tank. It can be fitted into the existing downpipe adjacent to the tank inlet and should be at a height that allows easy access by the user. Various configurations are possible and more details are contained in the filter installation guide. Connectors are supplied to 68mm round downpipe. For other sizes and profiles it is recommended to use an adaptor supplied by the rainwater system manufacturer or a 'flex-seal' type coupling both of which are available from most builders merchants. For optimum performance it is recommended that if the drop from the gutter is more than 2 metres, rainwater is channelled via a 45° elbow fitting into the filter inlet. This prevents the force of water pushing debris through the filter mesh. Details of secondary and tertiary filtering options are available on request.

##### ➤ Tank

The tank is designed to be installed vertically using the steel support frame supplied. It should stand on a load bearing foundation and must not be suspended by the support frame. Other configurations are possible and it is recommended that advice is sought from a civil engineer before proceeding. The supplied tap fitting is designed to be installed almost anywhere on the tank. It is recommended that the fitting is a

minimum of 10cm above the base and a braided flexible hose coupling is used to connect to the pump package. This connection should be insulated if it is outside the property to protect from frost damage. To protect the quality of the stored water it is recommended that the tank is shaded from strong sunlight and positioned to provide good air circulation around the installation.

➤ Rainwater Pump

The Rainwater Pump for toilet flushing and micro irrigation is designed to be installed inside the property or a weather protected enclosure. It is designed for intermittent duty, but may operate continuously pumping water for up to 30 minutes as long as the safety & ventilation requirement have been met. The mounting feet are intended to isolate the pump from the mounting surface; over tightening, flattening, or use of oversized screws will reduce the ability to isolate vibration/noise. It is recommended that an in-line sediment filter strainer (50-100 mesh) be installed at the inlet side to keep foreign debris out of the pump. The Rainwater Pump is offered as a bare component or as a 'plug and play' package. The pump can be installed to deliver a direct feed to utilities using rainwater or as part of a header tank and gravity feed system.

➤ Mains Top Up Valve

The mains valve is designed to be installed inside the property or weather protected enclosure. It should be installed in accordance with potable water regulations to provide the required air gap and pipework should be approved for use with mains water. It is recommended that the float switch is installed 15 cm above the base of the tank. The mains valve is also offered as a kit of bare components or as a 'plug and play' package.

➤ Plumbing

Standard polypropylene pressure pipe, waste pipe and rainwater products can be used for all connections. We recommend the use of isolation valves to facilitate easy access to components during maintenance. Inlet and outlet pipes should be rinsed out with clean water prior to commissioning as swarf, plumbers tape and debris can damage the pump.

For further technical information and support please contact;

Microstrain Ltd., Ace Express House, Kinsaley Lane, Malahide, Co. Dublin

Direct Line: 01 8038388

Email: [info@microstrain.ie](mailto:info@microstrain.ie)

[www.microstrain.ie](http://www.microstrain.ie)